

20th Anniversary Special Exhibition

## IZUMI KATO: ROAD TO SOMEBODY

July 5 (Sat) to September 1 (Mon), 2025

Iwami Art Museum, Shimane

Izumi Kato, the internationally active artist originally from Yasugi, Shimane, presents his largest solo exhibition to date.



[1] 《Untitled》 2024

Izumi Kato began his career as a painter in the late 1990s, consistently expressing simplified human faces and figures. Since the 2000s, he has also worked on wood sculptures, and currently, he creates works using a wide range of materials such as stone, fabric, soft vinyl, and plastic models. This exhibition brings together, for the first time, oil paintings from his high school years alongside his latest works, offering a retrospective of his artistic journey. Additionally, the exhibition introduces Kato's diverse activities from various perspectives, including his music projects, collaborations with brands, and original products.

## □ From Shimane to the World – A Comprehensive Look at Izumi Kato's Journey

The exhibition brings together, for the first time, oil paintings from Kato's high school years, along with early works from when he began his career as a painter and his latest creations, offering a retrospective of his artistic development. Visitors can observe the evolution of Kato's consistent exploration of the expression of "human figures (hitogata)."



[2] 《Yokikao No.11》 1998



[3] 《Untitled》 2008



[4] 《Untitled》 2007



[5] 《Untitled》 2011



[6] 《Untitled》 2017



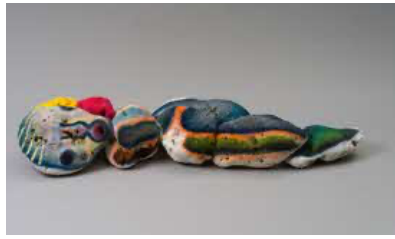
[7] 《Untitled》 2021

## □ Two-dimensional and three-dimensional, various materials and expressions.

Kato began his work with oil paintings, but has since expanded his range of expression to include large-scale works using fabric, lithographs, and more recently, traditional ukiyo-e woodblock prints. In three-dimensional works, he started with wood and has incorporated a variety of materials such as stone, metal, soft vinyl, and plastic models. His diverse creations range from small pieces that fit in the palm of your hand to large-scale works that you have to look up to, offering a wide variety of expressive forms.



[8] 《Untitled》 2014



[9] 《Untitled》 2017



[10] 《Untitled》 2022



[11] 《BACHMANN》 2021

### □ Music Activities, Products, etc. — Expanding Creation

Kato not only uses materials such as soft vinyl and plastic models but also produces products based on his own designs. He has collaborated with fashion brands, including Onitsuka Tiger. Additionally, he is active in bands as a member of THE TETORAPOTZ and HAKAIDERS and has handled artwork for records. This exhibition also introduces these wide-ranging creative activities.

### □ Spreading Across a Unique Space Designed by Hiroshi Naito

The show uses three distinct exhibition rooms, each with its own character. One of the highlights of the show is the collaboration with the space designed by Hiroshi Naito.

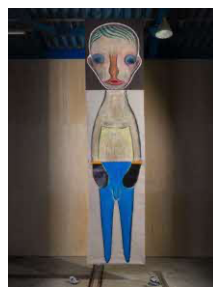
**Exhibition Room A:** A red room with floors, walls, and ceiling inspired by Sekishu roof tiles (石州瓦 red tiles) that cover the exterior of the museum. Through small works, original products, and videos, it offers a compact overview of the artist's 30 years of activity.

**Exhibition Room C:** A space with a high ceiling where natural light pours in, featuring installations with large-scale works.

**Exhibition Room D:** A large exhibition room of 1,000 square meters that gathers works from Kato's student days to his latest pieces, tracing the artist's journey so far.



[12] 《Untitled 52》 2014



[13] 《Untitled》 2019



[14] 《Untitled》 2021

\* LP record "THE TETORAPOTZ" jacket artwork

### □ Plenty of Events During the Exhibition!

Various related programs are planned throughout the exhibition period, including a talk by Izumi Kato and a live performance by THE TETORAPOTZ. For more details, please check the exhibition's official website.

Photo credit : Kei Okano [1][4][9][10][11][13] / Watanabe Ikuhiro [2][3][5][7][8] / Yusuke Sato [12]

#### [Contact]

##### Shimane Art Museum

5-15 Ariake-cho, Masuda-shi, Shimane 698-0022 Shimane Art Museum "Grant"

Tel: +81-856-31-1860 (main) +81-856-23-2050 (curator)

Fax: +81-856-31-1878

<https://www.grandtoit.jp>

E-mail: [grandtoit@cul-shimane.jp](mailto:grandtoit@cul-shimane.jp)

Contact: Kawanishi, Otani (Curator), Ueno (Public Relations)

#### [Basic Information]

**Duration** Saturday, July 5, 2025 to Monday, September 1, 2025

**Organizers** Shimane Art Museum (Iwami Art Museum), Shimane Cultural Promotion Foundation, San-in Chuo Shimpō

**Opening Hours** 9:30~18:00 (Last admission to the exhibition rooms: 5:30 PM)

**Closed** Tuesdays (Open on August 12)

##### Admission Fee

Same-day tickets: General admission 1,300 (1,050) yen, college students 600 (450) yen, high school students and younger free

Advance tickets: General admission 1,100 yen, college students 500 yen

\*Prices in parentheses are for groups of 20 or more \*Tickets for the special exhibition also grant admission to the collection exhibition.